

# 重组抗体产品目录

CUSABIO TECHNOLOGY LLC

YOUR  
GOOD PARTNER  
IN BIOLOGY RESEARCH  
[www.cusabio.com](http://www.cusabio.com)



重组抗体,也称为基因工程抗体,是指通过DNA重组技术将抗体相应的基因序列根据需要进行改造和重组,并构建在质粒上,再通过蛋白外源表达技术将构建好的质粒转染/转化入适合的宿主细胞表达获得的抗体。与传统抗体相比,重组抗体在批次间一致性、持续供应和无动物来源方面具有一定优势,在科学研究中应用越来越广泛。

CUSABIO自2020年起一直致力于重组抗体的开发和生产。目前,CUSABIO库存中有1000多种重组抗体,而且CUSABIO的大部分重组抗体已在多种应用中得到验证。为了更好地帮助客户进行治疗性抗体的研发,CUSABIO还成功生产了针对许多可作为药物靶点的重组抗体,包括CLDN18.2、CLDN6、CCR8、SSTR2、DLL3、LY6G6D、ROR1、SEMA4D、GPC3、CD16A等。

### 重组抗体与传统抗体的比较:



	单克隆抗体	多克隆抗体	重组抗体
重复性	高;批次间差异小	低	更高;高纯度,批次间差异更小
特异性	强	弱	更强
生产周期	4到6个月的开发; 4到6周的生产	2到3个月的 开发和生产	4个月的开发;1到6周的生产
同型亚基转换	困难	困难	方便
表达系统	小鼠腹水法和体外方法	通常在哺乳动物 细胞(如兔)	通常在哺乳动物细胞系中,也可在特殊 工程细胞系中表达,如酵母、细菌、昆虫 和转基因植物
成本	生产成本较高; 需要更专业的人员操作	成本相对较低	需要技术专长和较大的时间和金钱投入 进行生产
人类免疫应答	无法避免	无法避免	可避免

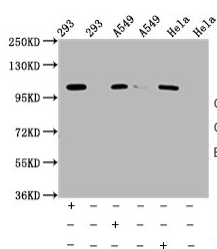


CUSABIO 重组抗体已在多种应用中进行验证, 包括WB、IF、IHC、FC、IP、ELIS、GICA以及中和实验。

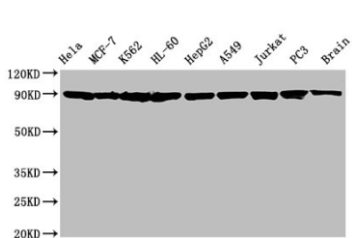
## 部分应用部分验证数据示例



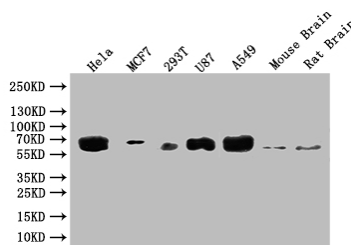
### 1 WB



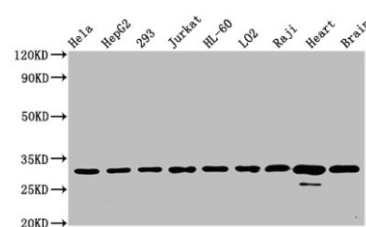
Phospho-ERN1 (S724) Antibody  
(CSB-RA007795A724pHU)



HSP90AA1/HSP90AB1 Antibody  
(CSB-RA010802A0HU)

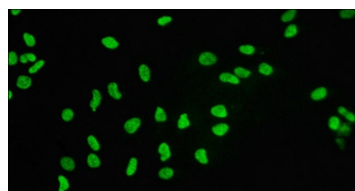


GBA Antibody  
(CSB-RA869334A0HU)

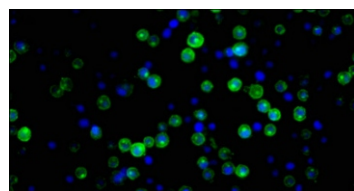


VDAC1 Antibody  
(CSB-RA025821A0HU)

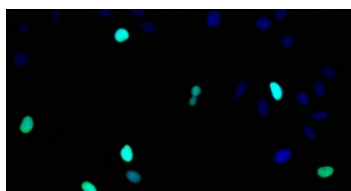
### 2 IF



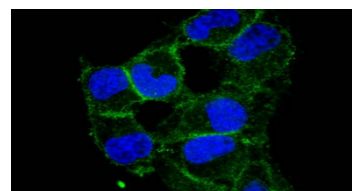
Histone H3.3 Antibody  
(CSB-RA010109A0HU)



CD21 Antibody  
(CSB-RA005934A0HU)

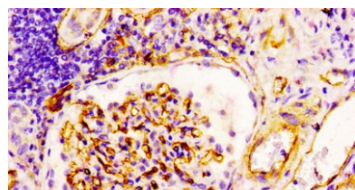


Histone H3.1 Antibody  
(CSB-RA010418A0HU)

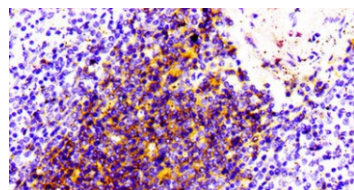


CD97 Antibody  
(CSB-RA004972A0HU)

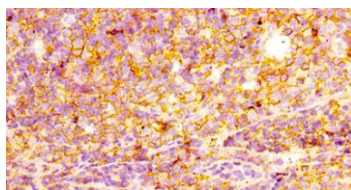
### 3 IHC



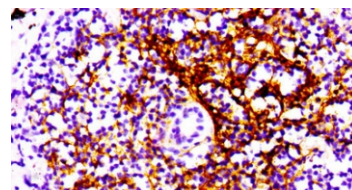
CD34 Antibody  
(CSB-RA004926A0HU)



CD4 Antibody  
(CSB-RA004935A0HU)

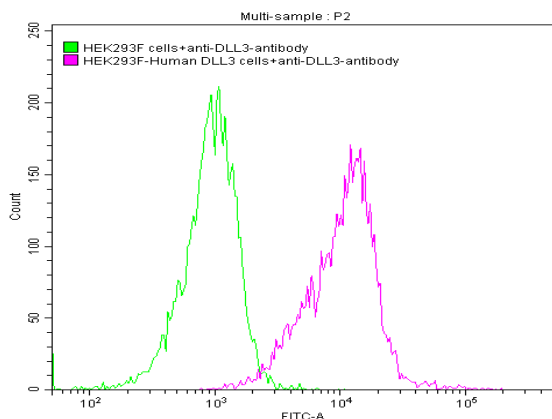


CD44 Antibody  
(CSB-RA004938A0HU)

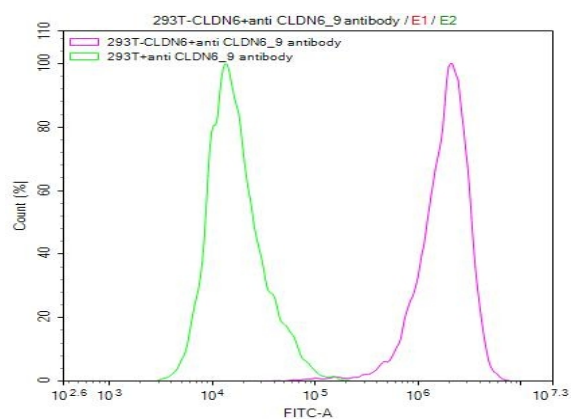


CD21 Antibody  
(CSB-RA005934A0HU)

### 4 FC

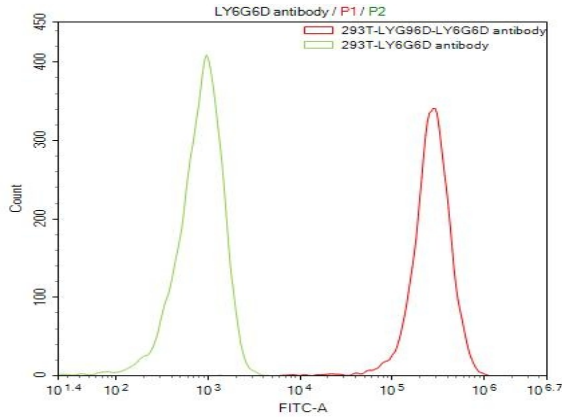


DLL3 Monoclonal Antibody (CSB-RA882142A1HU)

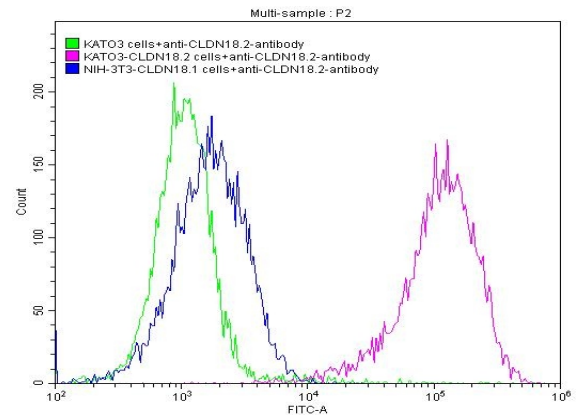


CLDN6/9 Monoclonal Antibody (CSB-RA005508MA1HU)

4 FC

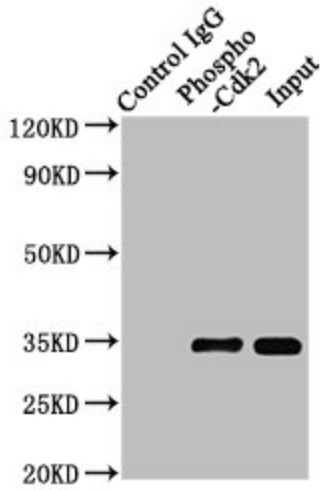


LY6G6D monoclonal antibody (CSB-RA013246MA1HU)

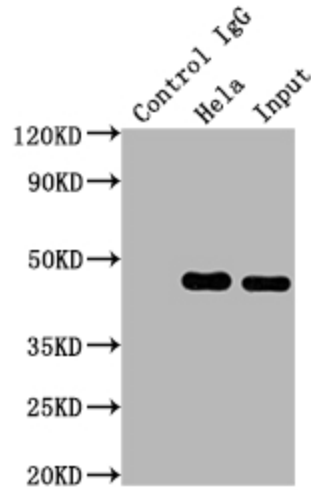


Claudin-18.2 Monoclonal Antibody (CSB-RA005498A1HU)

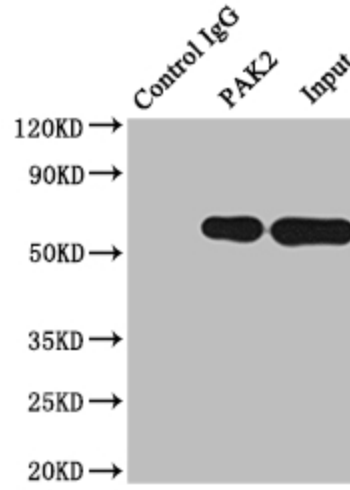
5 IP



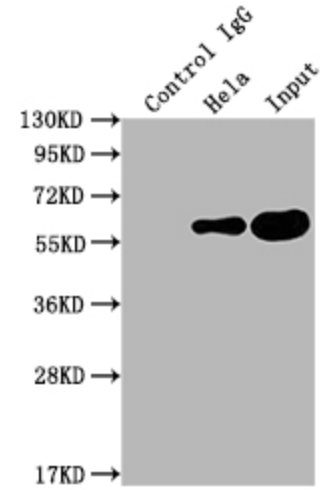
Phospho-CDK2 (Y15) Antibody (CSB-RA005061A15phHU)



MAP2K1 Antibody (CSB-RA957619A0HU)

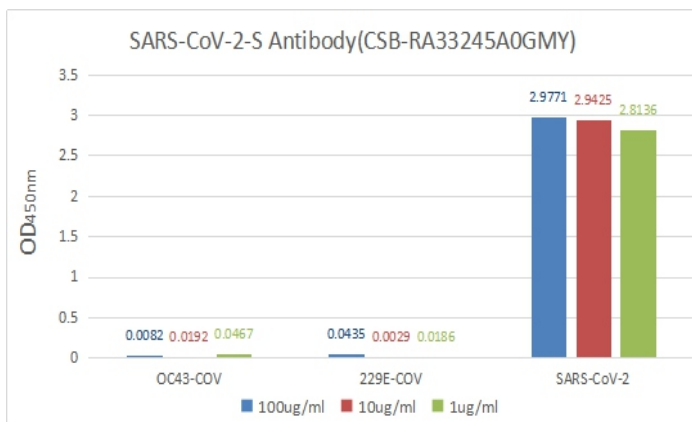


PAK2 Antibody (CSB-RA592787A0HU)

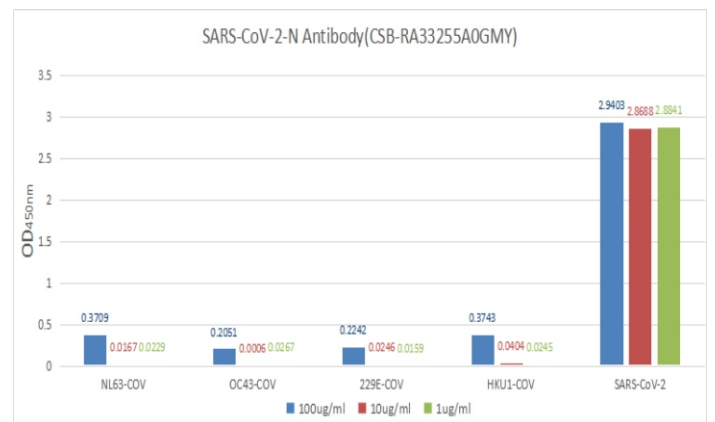


PKM Antibody (CSB-RA632595A0HU)

6 ELISA



S Antibody (CSB-RA33245A0GMY)



N Antibody (CSB-RA33255A0GMY)

## 7 GICA



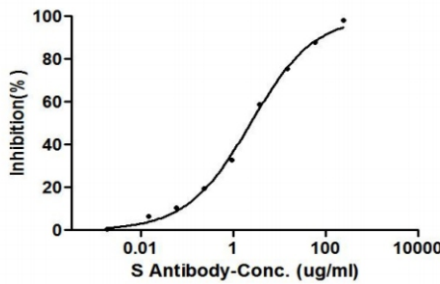
N Antibody (CSB-RA33255A1GMY)



N Antibody (CSB-RA33255A2GMY)

## 8 Neutralizing

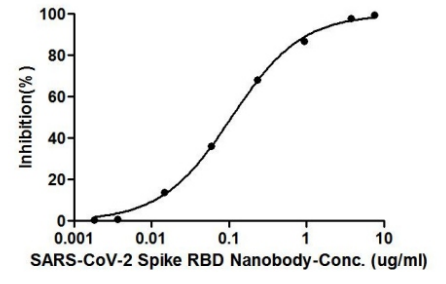
S Antibody	
µg/ml	Inhibition(%)
240	98.22%
60	87.70%
15	75.51%
3.75	58.82%
0.9375	32.69%
0.234375	19.35%
0.05859375	10.43%
0.014648438	6.58%
0.001831055	0.53%



IC<sub>50</sub>=2.38 µg/ml

S Antibody (CSB-RA33245A1GMY)

SARS-CoV-2 Spike RBD Nanobody	
µg/ml	Inhibition(%)
7.5	99.35%
3.75	97.84%
0.9375	86.89%
0.234375	68.27%
0.05859375	36.29%
0.014648438	13.77%
0.003662109	0.93%
0.001831055	0.66%



IC<sub>50</sub>=0.1074 µg/ml

SARS-CoV-2 Spike RBD Nanobody (CSB-RA33245A2GMY)

## 癌症



癌症是DNA (也称为基因) 突变的结果, 通常涉及单碱基突变、插入缺失、大基因组片段的拷贝数增加和易位。这些突变可能导致肿瘤的发展、侵犯附近组织和器官, 最终通过血液或淋巴系统转移到身体其他部位。

癌症有很多类型, 每种类型都有其特定的原因、风险因素和治疗方法。常见癌症包括乳腺癌、肺癌、前列腺癌和结肠癌等, CUSABIO 提供了132种与癌症相关的重组抗体, 帮助您的研究。

产品名称	货号	种属适应性	应用验证
ABCB1 Antibody	CSB-RA983422A0HU	Human	ELISA, IHC, IF
ACE Antibody	CSB-RA268157A0HU	Human	ELISA, IHC
ACLY Antibody	CSB-RA712206A0HU	Human	ELISA, WB, IF, FC
ACVRL1 Antibody	CSB-RA555022A0HU	Human	ELISA, WB, IHC

产品名称	货号	种属适应性	应用验证
AGTR1 Antibody	CSB-RA257443A0HU	Human	ELISA, WB
ALDH2 Antibody	CSB-RA799763A0HU	Human, Mouse, Rat	ELISA, WB, IHC
ALDOA Antibody	CSB-RA571479A0HU	Human, Mouse, Rat	ELISA, WB, IHC, IF
ALOX5 Antibody	CSB-RA198316A0HU	Human	ELISA, IHC
APOC3 Antibody	CSB-RA925915A0HU	Human	ELISA, IHC
ATP5A1 Antibody	CSB-RA159926A0HU	Human, Mouse	ELISA, WB, IHC
ATP5B Antibody	CSB-RA216446A0HU	Human, Mouse, Rat	ELISA, WB, IHC
BCL2 Antibody	CSB-RA564360A0HU	Human, Mouse	ELISA, WB, IHC
BCL2L1 Antibody	CSB-RA247982A0HU	Human, Mouse, Rat	ELISA, WB, IHC
BMP4 Antibody	CSB-RA257673A0HU	Human	ELISA, WB, IF
BRAF Antibody	CSB-RA171021A0HU	Human	ELISA, IHC
BUB1 Antibody	CSB-RA281837A0HU	Human	ELISA, WB
CAPN2 Antibody	CSB-RA899086A0HU	Human	ELISA, WB
CASP2 Antibody	CSB-RA291376A0HU	Human	ELISA, WB
CASP2 Antibody	CSB-RA782200A0HU	Human	ELISA, WB, IHC
CASP3 Antibody	CSB-RA286668A0HU	Human	ELISA, WB, IHC, IF
CASP3 Antibody	CSB-RA182616A0HU	Human	ELISA, WB, IHC
CASP3 Antibody	CSB-RA241798A0HU	Human	ELISA, WB, IHC
CASP3 Antibody	CSB-RA833808A0HU	Human	ELISA, WB, IHC
CCR2 Antibody	CSB-RA297464A0HU	Human	ELISA, IHC
CD22 Antibody	CSB-RA962691A0HU	Human	ELISA, IHC
CD27 Antibody	CSB-RA953976A0HU	Human	ELISA, WB
CD274 Antibody	CSB-RA977797A0HU	Human	ELISA, WB, IHC
CD38 Antibody	CSB-RA796695A0HU	Human	ELISA, WB, IHC
CD47 Antibody	CSB-RA802124A0HU	Human	ELISA, WB, IHC, IF
CDH1 Antibody	CSB-RA576116A0HU	Human	ELISA, IHC
CDH2 Antibody	CSB-RA243509A0HU	Human	ELISA, IHC
CEACAM1 Antibody	CSB-RA147192A0HU	Human	ELISA, IHC
CLU Antibody	CSB-RA449834A0HU	Human	ELISA, IHC
CSN2 Antibody	CSB-RA959139A0HU	Human	ELISA, IHC, FC
CUL3 Antibody	CSB-RA898115A0HU	Human	ELISA, IHC
CXCL10 Antibody	CSB-RA903061A0HU	Human	ELISA, IHC
CYP17A1 Antibody	CSB-RA554990A0HU	Human, Rat	ELISA, WB, IHC, IF
CYP1A2 Antibody	CSB-RA178519A0HU	Human	ELISA, WB, IHC
CYP3A4 Antibody	CSB-RA153677A0HU	Human	ELISA, IHC
DHFR Antibody	CSB-RA264582A0HU	Human, Mouse, Rat	ELISA, WB, IHC, IP
DPP4 Antibody	CSB-RA927191A0HU	Human	ELISA, IHC

产品名称	货号	种属适应性	应用验证
EGFR Antibody	CSB-RA159341A0HU	Human	ELISA, WB, IHC, IF, FC
EGFR Antibody	CSB-RA794061A0HU	Human	ELISA, WB, IHC
ELANE Antibody	CSB-RA200985A0HU	Human	ELISA, IHC, FC
ERBB2 Antibody	CSB-RA260392A0HU	Human	ELISA, IHC, IF
ERBB3 Antibody	CSB-RA937008A0HU	Human	ELISA, IF
EZR Antibody	CSB-RA194531A0HU	Human	ELISA, IHC
FAAH Antibody	CSB-RA560252A0HU	Human, Mouse	ELISA, WB, IHC
FADS1 Antibody	CSB-RA155442A0HU	Human	ELISA, WB, IHC, IF, FC
FGFR3 Antibody	CSB-RA555849A0HU	Human	ELISA, IF
FGFR3 Antibody	CSB-RA966627A0HU	Human	ELISA, WB
FIS1 Antibody	CSB-RA334524A0HU	Human	ELISA, WB, IHC
FN1 Antibody	CSB-RA921689A0HU	Human	ELISA, IHC
FNTB Antibody	CSB-RA267691A0HU	Human, Rat	ELISA, WB, IHC, IP
FOLH1 Antibody	CSB-RA162924A0HU	Human	ELISA, IHC
GALT Antibody	CSB-RA993143A0HU	Human	ELISA, FC
GCGR Monoclonal Antibody	CSB-RA009316A1HU	Human	ELISA
GPA33 Antibody	CSB-RA245537A0HU	Human	ELISA, IHC
GPX4 Antibody	CSB-RA188594A0HU	Human	ELISA, IHC
GRB2 Antibody	CSB-RA981267A0HU	Human, Mouse, Rat	ELISA, WB, IHC
HGD Antibody	CSB-RA695552A0HU	Human	ELISA, IHC
HMGCL Antibody	CSB-RA167089A0HU	Human	ELISA, WB, IHC, FC
HMGCS2 Antibody	CSB-RA693900A0HU	Human	ELISA, WB, IHC
IDO1 Antibody	CSB-RA215054A0HU	Human	ELISA, IHC
IGFBP2 Antibody	CSB-RA225697A0HU	Human	ELISA, WB, IHC
IL23A Antibody	CSB-RA251959A0HU	Human	ELISA, WB
IL4 Antibody	CSB-RA240377A0HU	Human	ELISA, IHC
ITGAV Antibody	CSB-RA548303A0HU	Human	ELISA, IHC
ITGAV Antibody	CSB-RA279866A0HU	Human	ELISA, WB, IHC
KLKB1 Antibody	CSB-RA553053A0HU	Human	ELISA, IHC
LDHC Antibody	CSB-RA886298A0HU	Human	ELISA, FC
LDLR Antibody	CSB-RA575353A0HU	Human	ELISA, IHC, IF, FC
LGR5 Antibody	CSB-RA262034A0HU	Human, Rat	ELISA, WB, FC
LOXL2 Antibody	CSB-RA907007A0HU	Human, Mouse, Rat	ELISA, WB, IHC, IF, FC
LPAR1 Antibody	CSB-RA922556A0HU	Human	ELISA, WB
LRP2 Antibody	CSB-RA288700A0HU	Human	ELISA, FC
LTA4H Antibody	CSB-RA198749A0HU	Human, Mouse	ELISA, WB
LTF Antibody	CSB-RA950380A0HU	Human	ELISA, IHC



产品名称	货号	种属适应性	应用验证
LTF Antibody	CSB-RA697089A0HU	Human	ELISA, IHC
MAD2L2 Antibody	CSB-RA782379A0HU	Human	ELISA, WB, IHC, IF
MAPK10 Antibody	CSB-RA240216A0HU	Human, Mouse	ELISA, WB, IHC, IF, FC
MGEA5 Antibody	CSB-RA833565A0HU	Human	ELISA, WB
MME Antibody	CSB-RA940661A0HU	Human	ELISA, WB
MME Antibody	CSB-RA187479A0HU	Human	ELISA, IHC
MMP12 Antibody	CSB-RA595609A0HU	Human	ELISA, WB, IHC
MPO Antibody	CSB-RA617176A0HU	Human	ELISA, IHC
MRAS Antibody	CSB-RA158563A0HU	Human	ELISA, WB
MUC16 Antibody	CSB-RA941216A0HU	Human	ELISA, IHC
MUC16 Antibody	CSB-RA973154A0HU	Human	ELISA, IHC
NDUFS3 Antibody	CSB-RA224121A0HU	Human	ELISA, WB, IHC
NQO2 Antibody	CSB-RA898300A0HU	Human, Mouse	ELISA, WB
NSDHL Antibody	CSB-RA843829A0HU	Human	ELISA, WB, IHC
PAK1 Antibody	CSB-RA287160A0HU	Human, Mouse	ELISA, WB, IF
PCSK9 Antibody	CSB-RA259644A0HU	Human	ELISA, WB, IHC
PDCD1 Antibody	CSB-RA240597A0HU	Human	ELISA, WB, IHC
PDGFRB Antibody	CSB-RA213932A0HU	Human	ELISA, IHC
PGAM1 Antibody	CSB-RA935337A0HU	Human, Mouse, Rat	ELISA, WB
PGF Antibody	CSB-RA280380A0HU	Human	ELISA, IHC
PIK3CA Antibody	CSB-RA578819A0HU	Human, Mouse	ELISA, WB, IF
PRDX3 Antibody	CSB-RA437344A0HU	Human	ELISA, WB, IHC, IF, FC
PRKAG1 Antibody	CSB-RA161743A0HU	Human	ELISA, IHC
PTGER2 Antibody	CSB-RA585843A0HU	Human	ELISA, IHC
PTGS1 Antibody	CSB-RA918236A0HU	Human, Mouse	ELISA, WB, FC
PTGS2 Antibody	CSB-RA920283A0HU	Human	ELISA, WB, IF
PTK2 Antibody	CSB-RA198162A0HU	Human	ELISA, IHC
PTX3 Antibody	CSB-RA984883A0HU	Human	ELISA, FC
RAB25 Antibody	CSB-RA284745A0HU	Human	ELISA, IF
RBP4 Antibody	CSB-RA784971A0HU	Human	ELISA, IHC
RET Antibody	CSB-RA288083A0HU	Human	ELISA, FC
RHEB Antibody	CSB-RA170650A0HU	Human	ELISA, IF
RHOA Antibody	CSB-RA898030A0HU	Human	ELISA, WB
RHOA Antibody	CSB-RA546523A0HU	Human	ELISA, IHC
ROCK2 Antibody	CSB-RA152329A0HU	Human, Mouse, Rat	ELISA, WB, IF
S100A9 Antibody	CSB-RA958800A0HU	Human	ELISA, IHC
S1PR1 Antibody	CSB-RA923827A0HU	Human	ELISA, WB



产品名称	货号	种属适应性	应用验证
SDHB Antibody	CSB-RA987662A0HU	Human, Mouse, Rat	ELISA, WB, IHC, FC
SERPINE1 Antibody	CSB-RA156066A0HU	Human	ELISA, WB, IHC
SKP2 Antibody	CSB-RA155372A0HU	Human	ELISA, IF, FC
SKP2 Antibody	CSB-RA224072A0HU	Human	ELISA, IHC, IF
SLC16A1 Antibody	CSB-RA919798A0HU	Human	ELISA, WB, IHC
SLC2A1 Antibody	CSB-RA297401A0HU	Human	ELISA, IHC
SLC2A3 Antibody	CSB-RA162667A0HU	Human	ELISA, WB, IHC, FC
SOD1 Antibody	CSB-RA829583A0HU	Human	ELISA, WB, FC
SPP1 Antibody	CSB-RA261140A0HU	Human	ELISA, WB, IHC
TGM2 Antibody	CSB-RA147681A0HU	Human	ELISA, WB
TNFRSF12A Antibody	CSB-RA441307A0HU	Human	ELISA, WB, IHC
TPBG Antibody	CSB-RA669019A0HU	Human	ELISA, IHC
TPBG Antibody	CSB-RA902876A0HU	Human, Mouse	ELISA, WB, IHC
TRAF2 Antibody	CSB-RA786226A0HU	Human	ELISA, WB, IHC, FC, IP
TYR Antibody	CSB-RA567167A0HU	Human	ELISA, IF
UQCRC2 Antibody	CSB-RA229127A0HU	Human	ELISA, WB, IHC
XDH Antibody	CSB-RA785778A0HU	Human	ELISA, WB, IHC

## 心血管疾病



心血管是指组成人体循环系统的**心脏和血管**。心血管系统负责将血液输送到全身,为组织和器官提供氧气和营养,并清除废物。常见的心血管疾病包括**冠状动脉病、心力衰竭、高血压、心律失常和周围动脉病**。

CUSABIO的产品广泛应用于**心血管病、高血压和动脉粥样硬化**等研究领域。我们致力于为研究人员提供可靠且经济实惠的工具,以推动对心血管系统的研究,并改善心血管疾病的诊断和治疗。

产品名称	货号	种属适应性	应用验证
ACAA2 Antibody	CSB-RA978277A0HU	Human, Mouse	ELISA, WB, IHC, IF
ADRB2 Antibody	CSB-RA286054A0HU	Human	ELISA, IHC
AGT Antibody	CSB-RA263831A0HU	Human	ELISA, IHC
AGTR2 Antibody	CSB-RA944053A0HU	Human, Mouse	ELISA, WB
ALAS1 Antibody	CSB-RA266893A0HU	Human	ELISA, WB
ANGPT2 Antibody	CSB-RA191985A0HU	Human	ELISA, IHC

产品名称	货号	种属适应性	应用验证
APOA2 Antibody	CSB-RA001915A0HU	Human	ELISA, WB, IHC, FC
ARNT Antibody	CSB-RA002121A0HU	Human	ELISA, WB, IHC, IP
CA9 Antibody	CSB-RA614990A0HU	Human	ELISA, IHC
CD31 Antibody	CSB-RA017767A0HU	Human	ELISA, WB, IHC, FC
CD63 Antibody	CSB-RA004950A0HU	Human	ELISA, IHC, IF
CD9 Antibody	CSB-RA004969A0HU	Human	ELISA, WB, IHC, IF, FC
CETP Antibody	CSB-RA005267A0HU	Human	ELISA, IHC
DKK1 Antibody	CSB-RA576260A0HU	Human	ELISA, WB
F10 Antibody	CSB-RA599469A0HU	Human	ELISA, IHC
F2 Antibody	CSB-RA912740A0HU	Human	ELISA, IHC
F3 Antibody	CSB-RA776663A0HU	Human, Rat	ELISA, WB, IHC
F9 Antibody	CSB-RA923075A0HU	Human	ELISA, WB
FABP4 Antibody	CSB-RA007945A0HU	Human	ELISA
GDF15 Antibody	CSB-RA285852A0HU	Human	ELISA, IHC
HAMP Antibody	CSB-RA010124A0HU	Human	ELISA, WB, IHC
HP Antibody	CSB-RA224179A0HU	Human	ELISA, IHC
ICAM1 Antibody	CSB-RA162789A0HU	Human	ELISA, IHC, FC
IRAK4 Antibody	CSB-RA284992A0HU	Human	ELISA, WB, FC
ITGA4 Antibody	CSB-RA225859A0HU	Human	ELISA, WB
LMO2 Antibody	CSB-RA825959A0HU	Human	ELISA, WB
MAPKAPK2 Antibody	CSB-RA951792A0HU	Human, Mouse	ELISA, WB
MAPKAPK2 Antibody	CSB-RA990134A0HU	Human	ELISA, WB, IHC
MMP9 Antibody	CSB-RA014679A0HU	Human	ELISA, IHC, FC
NPPA Antibody	CSB-RA016020A0HU	Human	ELISA
NT5E Antibody	CSB-RA978310A0HU	Human	ELISA, IHC
PDPN Antibody	CSB-RA017739A0HU	Human	ELISA
Phospho-PDGFRB (Y740) Antibody	CSB-RA017713A740phHU	Human	ELISA, WB
Phospho-PTK2 (Y397) Antibody	CSB-RA018994A397phHU	Human	ELISA, WB
PLAU Antibody	CSB-RA963043A0HU	Human	ELISA, IHC
PTGS2 Antibody	CSB-RA018986A0HU	Human	ELISA
PTPN1 Antibody	CSB-RA272100A0HU	Human	ELISA, WB, IHC
SELPLG Antibody	CSB-RA567010A0HU	Human	ELISA, IHC
THBD Antibody	CSB-RA222792A0HU	Human	ELISA, IHC
TSPO Antibody	CSB-RA025168A0HU	Human, Mouse	ELISA, WB, IHC, IF, FC, IP



细胞是生命的基本单位,细胞生物学是生物学的一个分支,研究细胞的结构、功能和行为。包括对细胞解剖学和生理学的研究,以及细胞过程,如新陈代谢、细胞分裂、信号传导和通讯等。

CUSABIO为细胞生物学研究提供全面的产品和服务,下表列出了与细胞生物学研究相关的重组抗体,如TSLP、TP63、GH1等。

产品名称	货号	种属适应性	应用验证
ACO2 Antibody	CSB-RA218127A0HU	Human	ELISA, IHC
ACTA1 Antibody	CSB-RA001205A0HU	Human	ELISA, WB, IHC, IF, FC
AHCY Antibody	CSB-RA176658A0HU	Human	ELISA, WB
ARG2 Antibody	CSB-RA216908A0HU	Human	ELISA, IHC, IF, FC
ATG12 Antibody	CSB-RA002283A0HU	Human	ELISA
AXIN2 Antibody	CSB-RA897472A0HU	Human	ELISA
BAG3 Antibody	CSB-RA002531A0HU	Human	ELISA, WB, IHC
BAK1 Antibody	CSB-RA624111A0HU	Human	ELISA, WB, IHC, FC, IP
BCAP31 Antibody	CSB-RA834263A0HU	Human	ELISA, WB, IHC, IF, FC
BCL2 Antibody	CSB-RA002611A0HU	Human, Mouse, Rat	ELISA, WB, IHC, FC
CASP9 Antibody	CSB-RA004555A0HU	Human	ELISA, WB, IF, FC
CDC25B Antibody	CSB-RA004995A0HU	Human	ELISA
CDC25C Antibody	CSB-RA004996A0HU	Human	ELISA, WB, IHC, IF, IP
CDKN1B Antibody	CSB-RA005087A0HU	Human, Mouse	ELISA, WB, IHC, IF
CSNK2A1 Antibody	CSB-RA964915A0HU	Human, Mouse	ELISA, WB
CSTB Antibody	CSB-RA914307A0HU	Human	ELISA, IF
CTPS1 Antibody	CSB-RA548305A0HU	Human	ELISA, IHC
CYP19A1 Antibody	CSB-RA006394A0HU	Human	ELISA, WB, IHC, IF
DAXX Antibody	CSB-RA871395A0HU	Human	ELISA
EPCAM Antibody	CSB-RA932207A0HU	Human	ELISA, WB
EPCAM Antibody	CSB-RA439934A0HU	Human	ELISA, WB, IHC
FOXO4 Antibody	CSB-RA008839A0HU	Human	ELISA
FURIN Antibody	CSB-RA271669A0HU	Human	ELISA, WB, IHC
GH1 Antibody	CSB-RA891358A0HU	Human	ELISA, IHC
GHR Antibody	CSB-RA978909A0HU	Human	ELISA, IHC, IF
GPC3 Antibody	CSB-RA009705A0HU	Human	ELISA, WB, IF
GSTO1 Antibody	CSB-RA009986A0HU	Human	ELISA, WB, IHC, IF
HMBS Antibody	CSB-RA998378A0HU	Human	ELISA, WB
HSPA5 Antibody	CSB-RA847116A0HU	Human	ELISA, IHC
HSPD1 Antibody	CSB-RA953395A0HU	Human, Mouse	ELISA, WB, IHC, IP

产品名称	货号	种属适应性	应用验证
ITCH Antibody	CSB-RA587302A0HU	Human	ELISA, WB
ITGA6 Antibody	CSB-RA172768A0HU	Human	ELISA, IF, FC
LEFTY2 Antibody	CSB-RA171603A0HU	Human	ELISA, WB
LMNA Antibody	CSB-RA013003A0HU	Human	ELISA, IHC, IF, FC, IP
METAP2 Antibody	CSB-RA294332A0HU	Human	ELISA, IHC
NTRK1 Antibody	CSB-RA202683A0HU	Human, Mouse, Rat	ELISA, WB
NUF2 Antibody	CSB-RA248269A0HU	Human	ELISA, WB
PAH Antibody	CSB-RA169000A0HU	Human	ELISA, IHC, IF
PDCD6IP Antibody	CSB-RA568053A0HU	Human, Rat	ELISA, WB, FC
Phospho-BRAF (T401) Antibody	CSB-RA002791A401phHU	Human	ELISA, WB, IF
Phospho-CDC37 (S13) Antibody	CSB-RA613684A13phHU	Human	ELISA, WB
Phospho-CDK1/CDK2/CDK3 (T14) Antibody	CSB-RA361848A14phHU	Human	ELISA, WB
Phospho-CDK2 (Y15) Antibody	CSB-RA005061A15phHU	Human	ELISA, WB, IHC, IP
Phospho-HSF1 (S326) Antibody	CSB-RA010791A326phHU	Human	ELISA, WB, IHC
Phospho-JAK2 (Y1007 + Y1008) Antibody	CSB-RA011931A100phHU	Human	ELISA, WB, IHC, IP
Phospho-MTOR (S2448) Antibody	CSB-RA008968A2448phHU	Human	ELISA, WB, IHC, IF
Phospho-MTOR (S2481) Antibody	CSB-RA008968A2481phHU	Human	ELISA, WB, IF
Phospho-PAK4/PAK5/PAK6 (S474/S560/S602) Antibody	CSB-RA017408A474phHU	Human	ELISA, WB, IF
Phospho-PTEN (S380) Antibody	CSB-RA018964A380phHU	Human	ELISA, WB
Phospho-RB1 (S780) Antibody	CSB-RA019386A780phHU	Human	ELISA, IHC, IF, IP
Phospho-RB1 (S807) Antibody	CSB-RA019386A807phHU	Human	ELISA, IF
Phospho-RPS6KB1 (T421+S424) Antibody	CSB-RA020470A421phHU	Human	ELISA, WB, IF, IP
Phospho-SMC1A (S957) Antibody	CSB-RA614804A957phHU	Human	ELISA, WB
Phospho-TP53 (S33) Antibody	CSB-RA024077A33phHU	Human	ELISA, IHC, IF
Phospho-TP53 (S392) Antibody	CSB-RA024077A392phHU	Human	ELISA, WB
Phospho-TP53 (S9) Antibody	CSB-RA024077A09phHU	Human	ELISA, IF
Phospho-TP53 (T55) Antibody	CSB-RA024077A55phHU	Human	ELISA, WB, IF
PRSS2 Antibody	CSB-RA789332A0HU	Human	ELISA, IF
PSME1 Antibody	CSB-RA943230A0HU	Human	ELISA, WB, IHC, IF, FC
RNF20 Antibody	CSB-RA227095A0HU	Human	ELISA, WB, IHC, IF
SAE1 Antibody	CSB-RA987582A0HU	Human	ELISA, WB, IF
STK3 Antibody	CSB-RA980100A0HU	Human	ELISA, WB
SUMO1 Antibody	CSB-RA022948A0HU	Human	ELISA, IHC, FC, IP
TACC3 Antibody	CSB-RA553945A0HU	Human	ELISA, WB, IHC
TMEM192 Antibody	CSB-RA249639A0HU	Human	ELISA, WB, IHC
TOMM22 Antibody	CSB-RA277640A0HU	Human	ELISA, WB, IHC
TP63 Antibody	CSB-RA887971A0HU	Human	ELISA, WB, IHC



产品名称	货号	种属适应性	应用验证
TXN Antibody	CSB-RA977675A0HU	Human, Rat	ELISA, WB
TXN Antibody	CSB-RA233609A0HU	Human	ELISA, WB
UAP1 Antibody	CSB-RA174034A0HU	Human	ELISA, WB
VDAC1 Antibody	CSB-RA025821A0HU	Human, Mouse, Rat	ELISA, WB, IHC

## 表观遗传学和核信号传导



表观遗传学和核信号传导是两个密切相关的研究领域,涉及到细胞核内基因表达和细胞过程的调控。表观遗传学指的是不涉及DNA序列本身变化的遗传性基因表达变化,而是染色质结构的修饰,这些修饰会影响基因对转录机器的可及性。核信号传导是指从细胞膜到细胞核传递的复杂信号网络,从而导致基因表达和细胞行为的变化。

产品名称	货号	种属适应性	应用验证
Acetyl-Histone H2A type 1-B/E (K9) Antibody	CSB-RA010385A09acHU	Human	ELISA, ICC, IF
Acetyl-Histone H2B type 1-B (K20) Antibody	CSB-RA010402A20acHU	Human, Mouse	ELISA, WB, ICC, IF, FC
Acetyl-Histone H3.1 (K56) Antibody	CSB-RA010418A56acHU	Human	ELISA, WB, ICC, IF
Acetyl-Histone H3.1 (K14) Antibody	CSB-RA010418A14acHU	Human, Rat	ELISA, WB, ICC, IF
Acetyl-Histone H3.1 (K4) Antibody	CSB-RA010418A04acHU	Human	ELISA, WB, ICC, IF
Acetyl-Histone H4 (K16) Antibody	CSB-RA010429A16acHU	Human, Mouse	ELISA, WB, ICC, IF, FC
Acetyl-Histone H4 (K5) Antibody	CSB-RA010429A05acHU	Human	ELISA, WB, ICC, IF
ACO1 Antibody	CSB-RA298469A0HU	Human	ELISA, WB, IF, FC
ADAR Antibody	CSB-RA906343A0HU	Human	ELISA, IHC
AGO3 Antibody	CSB-RA875700A0HU	Human	ELISA
AIFM1 Antibody	CSB-RA296617A0HU	Human, Rat	ELISA, WB, IHC
AKT1 Antibody	CSB-RA917625A0HU	Human, Mouse, Rat	ELISA, WB, IHC, IF
APC Antibody	CSB-RA951649A0HU	Human, Rat	ELISA, WB, IHC
AR Antibody	CSB-RA217661A0HU	Human	ELISA, WB, IHC
AR Antibody	CSB-RA243116A0HU	Human	ELISA, IHC
ATF2 Antibody	CSB-RA002270A0HU	Human	ELISA, WB, IHC
ATF4 Antibody	CSB-RA002272A0HU	Human	ELISA, WB, IHC, IF, FC, IP
ATF5 Antibody	CSB-RA180846A0HU	Human, Rat	ELISA, WB, IHC
ATM Antibody	CSB-RA618770A0HU	Human	ELISA, WB, IHC, IP
ATM Antibody	CSB-RA166706A0HU	Human	ELISA, IHC, FC
AURKA Antibody	CSB-RA223479A0HU	Human	ELISA, IF
AURKB Antibody	CSB-RA230110A0HU	Human	ELISA, WB, IHC, IP
BMI1 Antibody	CSB-RA916472A0HU	Human	ELISA, WB, IHC

产品名称	货号	种属适应性	应用验证
BRD4 Antibody	CSB-RA152430A0HU	Human	ELISA, WB, IHC
BUB1B Antibody	CSB-RA263021A0HU	Human	ELISA, WB, FC
CARS Antibody	CSB-RA158403A0HU	Human	ELISA, WB
CBX2 Antibody	CSB-RA632623A0HU	Human, Rat	ELISA, WB
CCND1 Antibody	CSB-RA616025A0HU	Human, Mouse	ELISA, WB
CCNE1 Antibody	CSB-RA968740A0HU	Human	ELISA, IHC, IF
CCNE1 Antibody	CSB-RA204558A0HU	Human	ELISA, IF
CDC37 Antibody	CSB-RA964136A0HU	Human	ELISA, WB, FC
CDC42 Antibody	CSB-RA177985A0HU	Human, Mouse	ELISA, WB, IHC
CDC45 Antibody	CSB-RA005020A0HU	Human	ELISA
CDC5L Antibody	CSB-RA858712A0HU	Human	ELISA, WB, IHC, IF, IP
CDK2 Antibody	CSB-RA961467A0HU	Human, Mouse	ELISA, WB, IHC
CDK4 Antibody	CSB-RA965615A0HU	Human	ELISA, WB, IP
CDK4 Antibody	CSB-RA697694A0HU	Human	ELISA, WB
CDK6 Antibody	CSB-RA555745A0HU	Human	ELISA, WB, IP
CDX1 Antibody	CSB-RA987794A0HU	Human	ELISA, WB, IF
CHEK1 Antibody	CSB-RA176809A0HU	Human	ELISA, WB, IHC, IF
CRTC3 Antibody	CSB-RA955619A0HU	Human	ELISA, IHC
DBF4 Antibody	CSB-RA155202A0HU	Human	ELISA, WB, IF
DDX5 Antibody	CSB-RA231179A0HU	Human, Mouse	ELISA, WB, IHC, IF, FC
DDX58 Antibody	CSB-RA207378A0HU	Human	ELISA, IHC
DDX6 Antibody	CSB-RA180423A0HU	Human	ELISA, IHC
DGCR8 Antibody	CSB-RA845175A0HU	Human	ELISA, WB
Di-methyl-Histone H3.1 (K4) Antibody	CSB-RA010418A04me2HU	Human, Mouse	ELISA, WB, ICC, IF, FC
Di-methyl-Histone H3.1 (K9) Antibody	CSB-RA010418A09me2HU	Human	ELISA, WB, IF
DLL3 Monoclonal Antibody	CSB-RA882142A1HU	Human	ELISA, FC
DNMT1 Antibody	CSB-RA160202A0HU	Human	ELISA, IHC, IF
DOT1L Antibody	CSB-RA238318A0HU	Human	ELISA, WB
E2F1 Antibody	CSB-RA826096A0HU	Human, Rat	ELISA, WB, IHC, IF, FC
E2F4 Antibody	CSB-RA179313A0HU	Human	ELISA, IHC, IF, FC
EIF4A1 Antibody	CSB-RA190088A0HU	Human	ELISA, WB, IF
EIF5A Antibody	CSB-RA932542A0HU	Human	ELISA, WB, IHC, IF, FC
EPAS1 Antibody	CSB-RA904931A0HU	Human	ELISA, IF
ESR1 Antibody	CSB-RA942338A0HU	Human	ELISA, IHC
ESR1 Antibody	CSB-RA172909A0HU	Human, Mouse	ELISA, WB
EZH2 Antibody	CSB-RA218051A0HU	Human	ELISA, IHC
EZH2 Antibody	CSB-RA942183A0HU	Human	ELISA, IHC

产品名称	货号	种属适应性	应用验证
FBP1 Antibody	CSB-RA787345A0HU	Human	ELISA, IHC
FEN1 Antibody	CSB-RA008585A0HU	Human	ELISA, WB, IHC, IF
FLI1 Antibody	CSB-RA207775A0HU	Human	ELISA, WB
FOXA1 Antibody	CSB-RA246102A0HU	Human	ELISA, WB, IHC, IP
FOXO3 Antibody	CSB-RA008836A0HU	Human	ELISA, WB, IHC, IF
FUBP1 Antibody	CSB-RA157765A0HU	Human	ELISA, WB, IHC, IF, FC, IP
GATA3 Antibody	CSB-RA196111A0HU	Human	ELISA, WB, IHC
GMNN Antibody	CSB-RA585624A0HU	Human	ELISA, IF
HDAC1 Antibody	CSB-RA299884A0HU	Human	ELISA, WB
HDAC2 Antibody	CSB-RA593846A0HU	Human	ELISA, WB, IHC
HDAC2 Antibody	CSB-RA949799A0HU	Human	ELISA, WB, IHC, IF
HDAC3 Antibody	CSB-RA906662A0HU	Human	ELISA, WB, IHC
HDAC6 Antibody	CSB-RA010242A0HU	Human	ELISA, WB, IHC, IP
HDAC9 Antibody	CSB-RA010245A0HU	Human	ELISA, WB, IHC, IF
HIF1A Antibody	CSB-RA263943A0HU	Human	ELISA, IF
HIF1AN Antibody	CSB-RA256295A0HU	Human	ELISA, WB, IHC, IF, FC
Histone H1.0 Antibody	CSB-RA010087A0HU	Human	ELISA
Histone H2A type 1-B/E Antibody	CSB-RA010385A0HU	Human	ELISA, WB, IF
Histone H2B type 1-K Antibody	CSB-RA010411A0HU	Human	ELISA, WB, IHC
Histone H3.1 Antibody	CSB-RA010418A0HU	Human	ELISA, WB, IHC, IF, FC
Histone H3.3 Antibody	CSB-RA010109A0HU	Human	ELISA, IHC, IF
Histone H4 Antibody	CSB-RA010429A0HU	Human	ELISA, IHC, FC
HMGB1 Antibody	CSB-RA439052A0HU	Human	ELISA, WB, IHC
HNRNPC Antibody	CSB-RA010605A0HU	Human	ELISA, WB, IHC, IF, FC, IP
HNRNPK Antibody	CSB-RA010611A0HU	Human	ELISA, WB, IHC, IF, IP
HSF1 Antibody	CSB-RA279005A0HU	Human	ELISA, IHC
Hydroxyl-Histone H2A type 1-B/E (Y39) Antibody	CSB-RA010385A39ohHU	Human	ELISA, WB
ID1 Antibody	CSB-RA253477A0HU	Human, Mouse	ELISA, WB, IF
IFIH1 Antibody	CSB-RA963423A0HU	Human, Mouse	ELISA, WB
IKBKB Antibody	CSB-RA261933A0HU	Human	ELISA, WB
IKBKB Antibody	CSB-RA256500A0HU	Human	ELISA, WB, IHC, IF
ILF3 Antibody	CSB-RA289890A0HU	Human	ELISA, IHC, IF
ISG15 Antibody	CSB-RA937491A0HU	Human	ELISA, IHC, FC
JAK1 Antibody	CSB-RA227790A0HU	Human	ELISA, IHC
JAK2 Antibody	CSB-RA267127A0HU	Human	ELISA, IF
JAK3 Antibody	CSB-RA206737A0HU	Human	ELISA, IHC
JUN Antibody	CSB-RA911286A0HU	Human	ELISA, WB, IHC

产品名称	货号	种属适应性	应用验证
JUNB Antibody	CSB-RA988421A0HU	Human	ELISA, IHC, IF
KAT8 Antibody	CSB-RA694283A0HU	Human	ELISA, IHC, IF
KDM1A Antibody	CSB-RA222329A0HU	Human	ELISA, WB, IHC
KDM1B Antibody	CSB-RA958367A0HU	Human	ELISA, WB
KIF11 Antibody	CSB-RA956956A0HU	Human	ELISA, WB
KIFAP3 Antibody	CSB-RA869779A0HU	Human	ELISA, WB, IHC, IF
KLF4 Antibody	CSB-RA194949A0HU	Human	ELISA, WB, IHC, IF, IP
LIG1 Antibody	CSB-RA877322A0HU	Human	ELISA, WB, IHC
MBD1 Antibody	CSB-RA794480A0HU	Human	ELISA, IF
MEN1 Antibody	CSB-RA242999A0HU	Human	ELISA, WB
MET Antibody	CSB-RA983271A0HU	Human	ELISA, WB, IHC, IF, FC
MET Antibody	CSB-RA634199A0HU	Human	ELISA, IHC
MGMT Antibody	CSB-RA966553A0HU	Human	ELISA, WB, IHC
Mono/Di/Tri-methyl-Histone H3.1 (K14) Antibody	CSB-RA010418A14meHU	Human	ELISA
Mono/Di/Tri-methyl-Histone H3.1 (K79) Antibody	CSB-RA010418A79meHU	Human, Rat	ELISA
Mono-methyl-Histone H2B type 2-E (R79) Antibody	CSB-RA620981A79me1HU	Human, Mouse	ELISA
Mono-methyl-Histone H3.1 (K18) Antibody	CSB-RA010418A18me1HU	Human	ELISA, WB, ICC, IF
Mono-methyl-Histone H3.1 (K36) Antibody	CSB-RA010418A36me1HU	Human	ELISA, WB, ICC, IF
Mono-methyl-Histone H3.1 (R128) Antibody	CSB-RA010418A128me1HU	Human, Mouse	ELISA, WB
Mono-methyl-Histone H3.1 (R17) Antibody	CSB-RA010418A17me1HU	Human	ELISA, WB, ICC, IF
Mono-methyl-Histone H3.1 (R2) Antibody	CSB-RA010418A02me1HU	Human	ELISA, WB, ICC, IF
Mono-methyl-Histone H4 (K16) Antibody	CSB-RA010429A16me1HU	Human, Rat	ELISA, IF
MYBBP1A Antibody	CSB-RA978157A0HU	Human	ELISA, IHC, IF
MYC Antibody	CSB-RA914333A0HU	Human	ELISA, FC
NFE2L2 Antibody	CSB-RA225569A0HU	Human	ELISA, IF
NKX2-1 Antibody	CSB-RA181189A0HU	Human	ELISA, WB, IHC, FC
NONO Antibody	CSB-RA273277A0HU	Human	ELISA, WB, IHC, IF
NOTCH1 Antibody	CSB-RA599445A0HU	Human	ELISA, WB, IHC
NR3C1 Antibody	CSB-RA958910A0HU	Human	ELISA, WB, FC
NTHL1 Antibody	CSB-RA832492A0HU	Human	ELISA, WB, IHC, IF, FC
NUDT5 Antibody	CSB-RA936419A0HU	Human	ELISA, WB, FC
NUP153 Antibody	CSB-RA986790A0HU	Human	ELISA, IHC, IF
NUP98 Antibody	CSB-RA995655A0HU	Human	ELISA, WB, IHC, IF
OS9 Antibody	CSB-RA959292A0HU	Human, Mouse	ELISA, WB, IHC
PABPN1 Antibody	CSB-RA569290A0HU	Human	ELISA, WB, IHC, IF, FC
PARP1 Antibody	CSB-RA160472A0HU	Human	ELISA, WB, IHC
PARP1 Antibody	CSB-RA581794A0HU	Human	ELISA, WB, IHC, IF, FC



产品名称	货号	种属适应性	应用验证
PARP1 Antibody	CSB-RA258431A0HU	Human	ELISA, IHC
PELP1 Antibody	CSB-RA999292A0HU	Human	ELISA, WB, IHC
Phospho-ATF2 (T71) Antibody	CSB-RA002270A71phHU	Human	ELISA, WB, IF
Phospho-ATM (S1981) Antibody	CSB-RA618770A1981phHU	Human	ELISA, IF
Phospho-CREB1 (S133) Antibody	CSB-RA005947A133phHU	Human	ELISA, WB, IHC, IF
Phospho-EIF2S1 (S51) Antibody	CSB-RA007523A51phHU	Human	ELISA, WB, IHC, IF
Phospho-EIF4E (S209) Antibody	CSB-RA007556A209phHU	Human	ELISA, WB, IHC
Phospho-FOXO3 (S253) Antibody	CSB-RA008836A253phHU	Human	ELISA, WB, IHC
Phospho-Histone H1.4 (T17) Antibody	CSB-RA010380A17phHU	Human	ELISA, IHC, IF
Phospho-Histone H2AX (S139) Antibody	CSB-RA010097A139phHU	Human	ELISA, WB
Phospho-Histone H3.1 (S10) Antibody	CSB-RA010418A10phHU	Human	ELISA, WB, ICC, IF
Phospho-Histone H3.3 (T3) Antibody	CSB-RA010109A03phHU	Human, Mouse	ELISA, WB, ICC, FC
Phospho-JUN (S63) Antibody	CSB-RA011972A63phHU	Human	ELISA, WB, IHC, IF
Phospho-MYB (S11) Antibody	CSB-RA015261A11phHU	Human	ELISA, IF
Phospho-MYC (S62) Antibody	CSB-RA015270A62phHU	Human	ELISA, WB, IF
Phospho-MYC (T58+S62) Antibody	CSB-RA015270A58-62phHU	Human	ELISA, WB
Phospho-NBN (S343) Antibody	CSB-RA015486A343phHU	Human	ELISA, WB
Phospho-NFE2L2 (S40) Antibody	CSB-RA614961A40phHU	Human	ELISA, WB, IHC, IF
Phospho-POLR2A (S2) Antibody	CSB-RA018327A02phHU	Human	ELISA, WB, IHC, IF, IP
Phospho-POLR2A (S5) Antibody	CSB-RA018327A05phHU	Human	ELISA, WB, IHC, IF
Phospho-PRKDC (S2056) Antibody	CSB-RA018714A2056phHU	Human	ELISA, IF
Phospho-RPA2 (T21) Antibody	CSB-RA020089A21phHU	Human	ELISA, IF
PIN4 Antibody	CSB-RA916699A0HU	Human	ELISA, WB, IHC, IF
PKM Antibody	CSB-RA632595A0HU	Human, Mouse	ELISA, WB, IHC, IF, FC, IP
POU2AF1 Antibody	CSB-RA280291A0HU	Human	ELISA, WB, IHC
PRMT5 Antibody	CSB-RA176962A0HU	Human	ELISA, WB, IHC
PTBP1 Antibody	CSB-RA987652A0HU	Human	ELISA, WB, IHC
RARA Antibody	CSB-RA019338A0HU	Human	ELISA, IHC
RBBP4 Antibody	CSB-RA915915A0HU	Human, Mouse, Rat	ELISA, WB, IHC, IF
RIOX2 Antibody	CSB-RA810267A0HU	Human	ELISA
RPS19 Antibody	CSB-RA940350A0HU	Human	ELISA, WB, FC
RPS6KB1 Antibody	CSB-RA779090A0HU	Human, Mouse	ELISA, WB
RPS6KB1 Antibody	CSB-RA299200A0HU	Human	ELISA, IF
RPTOR Antibody	CSB-RA581950A0HU	Human	ELISA, IHC
SENP1 Antibody	CSB-RA150103A0HU	Human	ELISA, WB, IHC, IF, FC
SF3B1 Antibody	CSB-RA102629A0HU	Human, Mouse	ELISA, WB, IHC, IF
SIN3A Antibody	CSB-RA242724A0HU	Human	ELISA, WB, IHC, IF

产品名称	货号	种属适应性	应用验证
SIRT1 Antibody	CSB-RA556800A0HU	Human	ELISA, IHC, IF
SIRT5 Antibody	CSB-RA156557A0HU	Human	ELISA, IHC
SMAD4 Antibody	CSB-RA551397A0HU	Human	ELISA, WB
SMC1A Antibody	CSB-RA149196A0HU	Human	ELISA, WB, IHC
SMN1 Antibody	CSB-RA567382A0HU	Human	ELISA, IHC
SOX10 Antibody	CSB-RA592917A0HU	Human	ELISA, WB, IHC, IF
SOX2 Antibody	CSB-RA973770A0HU	Human, Mouse, Rat	ELISA, WB, IHC
SOX9 Antibody	CSB-RA202969A0HU	Human	ELISA, IHC
STAG2 Antibody	CSB-RA292183A0HU	Human	ELISA, WB, IF
STAT3 Antibody	CSB-RA546821A0HU	Human	ELISA, FC
STAT3 Antibody	CSB-RA229700A0HU	Human	ELISA, WB, IHC
STAT3 Antibody	CSB-RA188270A0HU	Human	ELISA, IHC
STAT4 Antibody	CSB-RA547973A0HU	Human	ELISA, IHC, IF
STAT6 Antibody	CSB-RA988543A0HU	Human, Mouse	ELISA, WB, IHC
SUZ12 Antibody	CSB-RA159561A0HU	Human	ELISA, WB, IHC, IP
SYNCRIP Antibody	CSB-RA984434A0HU	Human	ELISA, IHC, IF
TBK1 Antibody	CSB-RA932866A0HU	Human	ELISA, IHC, FC
TBP Antibody	CSB-RA821481A0HU	Human	ELISA, WB
TERT Antibody	CSB-RA798840A0HU	Human	ELISA, IHC
TINF2 Antibody	CSB-RA997969A0HU	Human, Mouse, Rat	ELISA, WB
TLR7 Antibody	CSB-RA556665A0HU	Human	ELISA, IHC
TMEM173 Antibody	CSB-RA843206A0HU	Human	ELISA, WB
TOP1 Antibody	CSB-RA792129A0HU	Human	ELISA, WB, IHC, FC, IP
TOP2A Antibody	CSB-RA696677A0HU	Human, Mouse	ELISA, WB, IHC
TP53 Antibody	CSB-RA236796A0HU	Human	ELISA, WB, IHC, IF
TP53 Antibody	CSB-RA825742A0HU	Human	ELISA, WB, IHC, IF
TP53 Antibody	CSB-RA214807A0HU	Human	ELISA, IHC
TP53 Antibody	CSB-RA592348A0HU	Human	ELISA, IF
Tri-methyl-Histone H4 (K20) Antibody	CSB-RA010429A20me3HU	Human	ELISA, WB, ICC
TYMS Antibody	CSB-RA584889A0HU	Human	ELISA, WB
USP14 Antibody	CSB-RA587609A0HU	Human	ELISA, WB, IF
USP22 Antibody	CSB-RA784212A0HU	Human	ELISA, WB, IF, FC
USP24 Antibody	CSB-RA178866A0HU	Human	ELISA, IF, FC
USP7 Antibody	CSB-RA192026A0HU	Human	ELISA, WB, IHC, IF
VDR Antibody	CSB-RA945260A0HU	Human	ELISA, WB, IHC
WT1 Antibody	CSB-RA950156A0HU	Human	ELISA, WB, IHC
XPO1 Antibody	CSB-RA930964A0HU	Human	ELISA, IHC

产品名称	货号	种属适应性	应用验证
XRCC5 Antibody	CSB-RA276627A0HU	Human	ELISA, WB, IHC, IF
YY1 Antibody	CSB-RA026297A0HU	Human	ELISA

## 免疫学



免疫学是研究免疫系统的科学,免疫系统是由一系列细胞、组织和器官组成的复杂网络,它们共同保护身体免受外来物质如细菌、病毒和寄生虫以及异常细胞如癌细胞的侵害。CUSABIO提供免疫学相关重组抗体,助力您的研究。

产品名称	货号	种属适应性	应用验证
ACTR3 Antibody	CSB-RA213635A0HU	Human, Mouse, Rat	ELISA, WB
ALCAM Antibody	CSB-RA437652A0HU	Human, Mouse	ELISA, WB, IHC
ANGPT2 Monoclonal Antibody	CSB-RA001707MA01HU	Human	ELISA
ANPEP Antibody	CSB-RA993633A0HU	Human	ELISA, IHC
BTK Antibody	CSB-RA553167A0HU	Human	ELISA, IHC
C5AR1 Monoclonal Antibody	CSB-RA003996A0HU	Human	ELISA
CCL19 Antibody	CSB-RA859522A0HU	Human	ELISA, IHC
CCR4 Monoclonal Antibody	CSB-RA004843MA01HU	Human	ELISA, FC
CCR8 Monoclonal Antibody	CSB-RA004847A1HU	Human	FC
CCR8 Monoclonal Antibody	CSB-RA004847MA3HU	Human	FC
CCR8 Monoclonal Antibody	CSB-RA004847MA2HU	Human	FC
CCR8 Monoclonal Antibody	CSB-RA004847MA4HU	Human	FC
CCR9 Antibody	CSB-RA004848A0HU	Human, Mouse	ELISA, WB, IF, IP
CD146 Antibody	CSB-RA013563A0HU	Human	ELISA, WB, IHC, IF, FC
CD163 Antibody	CSB-RA801238A0HU	Human	ELISA, IHC, FC
CD19 Antibody	CSB-RA004888A0HU	Human	ELISA
CD19 Antibody	CSB-RA780821A0HU	Human	ELISA, WB, IHC, IP
CD20 Antibody	CSB-RA015007A0HU	Human	ELISA
CD21 Antibody	CSB-RA005934A0HU	Human	ELISA, WB, IHC, IF, FC
CD4 Antibody	CSB-RA004935A0HU	Human	ELISA, WB, IHC
CD44 Antibody	CSB-RA004938A0HU	Human	ELISA, WB, IHC
CD45 Antibody	CSB-RA019049A0HU	Human	ELISA
CD46 Antibody	CSB-RA908548A0HU	Human	ELISA, WB, IHC
CD48 Antibody	CSB-RA178195A0HU	Human	ELISA, WB
CD55 Antibody	CSB-RA440943A0HU	Human	ELISA, WB, IHC
CD58 Antibody	CSB-RA166177A0HU	Human	ELISA, WB

产品名称	货号	种属适应性	应用验证
Cd74 Antibody	CSB-RA004956A0HU	Human	ELISA, IHC, FC
CD74 Monoclonal Antibody	CSB-RA004956A1HU	Human	ELISA
CD80 Antibody	CSB-RA246383A0HU	Human	ELISA, WB, IHC, IP
CD81 Antibody	CSB-RA004960A0HU	Human, Mouse, Rat	ELISA, WB, IHC, FC
CD86 Antibody	CSB-RA004965A0HU	Human	ELISA, WB
CD8A Antibody	CSB-RA934881A0HU	Human	ELISA, WB, IHC, IP
CD96 Monoclonal Antibody	CSB-RA004971A0HU	Human	ELISA
CD99 Antibody	CSB-RA004973A0HU	Human	ELISA, WB, IHC, FC
CEACAM5/CEACAM6 Monoclonal Antibody	CSB-RA005165MA2HU	Human	ELISA
CLDN3 Monoclonal Antibody	CSB-RA005505MA1HU	Human	ELISA
CLDN4 Monoclonal Antibody	CSB-RA005506MA1HU	Human	ELISA
CLDN6/9 Monoclonal Antibody	CSB-RA005508MA1HU	Human	ELISA,FC
CNR1 Monoclonal Antibody	CSB-RA005678MA01HU	Human	ELISA
CR1 Antibody	CSB-RA714310A0HU	Human	ELISA, IHC
CSF2RB Monoclonal Antibody	CSB-RA006047A0HU	Human	ELISA
CTLA4 Antibody	CSB-RA213310A0HU	Human	ELISA, IHC
CTSS Antibody	CSB-RA788455A0HU	Human	ELISA, IHC
CXCR4 Monoclonal Antibody	CSB-RA006254MA01HU	Human	ELISA
DDR1 Monoclonal Antibody	CSB-RA006595MA1HU	Human	ELISA
DSG3 Monoclonal Antibody	CSB-RA007205A0HU	Human, Mouse	ELISA
ENPEP Antibody	CSB-RA552900A0HU	Human	ELISA, IHC
ENPP3 Monoclonal Antibody	CSB-RA007681MA1HU	Human, Macaca fascicularis	ELISA,FC
ENTPD1 Antibody	CSB-RA568544A0HU	Human	ELISA, FC
FAS Antibody	CSB-RA252392A0HU	Human	ELISA, WB, IHC
FCGR2A Antibody	CSB-RA163349A0HU	Human	ELISA, WB
GLP1R monoclonal antibody	CSB-RA009514MA1HU	Human	ELISA
GPC3 Monoclonal Antibody	CSB-RA009705A1HU	Human	ELISA
GPRC5D Monoclonal Antibody	CSB-RA882153MA01HU	Human	ELISA
GUCY2C Monoclonal Antibody	CSB-RA010053A3HU	Human	ELISA, FC
GUCY2C Monoclonal Antibody	CSB-RA010053A2HU	Human	ELISA, FC
GZMB Antibody	CSB-RA794900A0HU	Human	ELISA, IHC, IF
HAVCR1 Antibody	CSB-RA974628A0HU	Human, Mouse	ELISA, WB
IFNAR1 Antibody	CSB-RA011046A0HU	Human	ELISA
IL10 Antibody	CSB-RA011580A0HU	Human	ELISA
IL12&IL23 monoclonal antibody	CSB-RA011587MA1HU	Human	ELISA
IL17A monoclonal antibody	CSB-RA624104MA1HU	Human	ELISA
INPP5D Antibody	CSB-RA157463A0HU	Human	ELISA, WB, IHC, IP



产品名称	货号	种属适应性	应用验证
ITGAL Antibody	CSB-RA787996A0HU	Human	ELISA, WB, IF
KLRG1 Antibody	CSB-RA233042A0HU	Human	ELISA, FC
LRG1 Antibody	CSB-RA229992A0HU	Human	ELISA, WB, IHC
LTA Antibody	CSB-RA013218A0HU	Human	ELISA
LY6G6D monoclonal antibody	CSB-RA013246MA1HU	Human, Macaca fascicularis	ELISA, FC
MAPK14 Antibody	CSB-RA236860A0HU	Human	ELISA, WB, IHC, IF
MAPK14 Antibody	CSB-RA582884A0HU	Human	ELISA, WB
MAPK14 Antibody	CSB-RA780541A0HU	Human, Rat	ELISA, WB, IHC, IF
MAPT Monoclonal Antibody	CSB-RA013481A1HU	Mouse, Macaca mulatta	ELISA
MIF Antibody	CSB-RA146975A0HU	Human	ELISA, WB
MS4A1 Monoclonal Antibody	CSB-RA015007A1HU	Human	ELISA
MS4A1 Monoclonal Antibody	CSB-RA015007MA3HU	Human, Dog	ELISA
NECTIN4 Monoclonal Antibody	CSB-RA822274A0HU	Human	ELISA
PD-1 monoclonal antibody	CSB-RA619964MA1HU	Human	ELISA
Phospho-GATA3 (S308) Antibody	CSB-RA009276A308phHU	Human	ELISA, WB, IHC
Phospho-IRF3 (S386) Antibody	CSB-RA011818A386phHU	Human	ELISA, WB
Phospho-LAT (Y191) Antibody	CSB-RA012767A191phHU	Human	ELISA, WB, IHC, IF, IP
PIK3CB Antibody	CSB-RA240122A0HU	Human	ELISA, WB, IP
PPIA Antibody	CSB-RA917671A0HU	Human	ELISA, WB
PRLR Monoclonal Antibody	CSB-RA018727A0HU	Human, Mouse	ELISA
PROM1 monoclonal antibody	CSB-RA018751MA1HU	Human	ELISA
ROR1 Monoclonal Antibody	CSB-RA020067A1HU	Human	ELISA
SEMA4D Monoclonal Antibody	CSB-RA835707A2HU	Human, Mouse	ELISA, FC
SLC39A6 monoclonal antibody	CSB-RA621669MA1HU	Human	ELISA
SSTR2 Monoclonal Antibody	CSB-RA022725MA01HU	Human	ELISA, FC
TFPI Monoclonal Antibody	CSB-RA023437MA01HU	Human, Rabbit	ELISA
TLR5 Antibody	CSB-RA545516A0HU	Human	ELISA, WB
TMEFF2 monoclonal antibody	CSB-RA883439MA1HU	Human	ELISA
TNFRSF9/4-1BB Monoclonal Antibody	CSB-RA023984A1HU	Human	ELISA
TPBG monoclonal antibody	CSB-RA024093MA1HU	Human, Macaca mulatta	ELISA
TPT1 Antibody	CSB-RA214107A0HU	Human, Mouse	ELISA, WB, IHC, IF, IP
TROP2 monoclonal antibody	CSB-RA023072MA1HU	Human	ELISA
ULBP1 Antibody	CSB-RA446786A0HU	Human	ELISA, WB
VSIG4 monoclonal antibody	CSB-RA896869MA1HU	Human	ELISA
ZG16B Monoclonal Antibody	CSB-RA836195MA1HU	Human	ELISA



CUSABIO密切关注SARS-CoV-2的发展进程,并获取到病毒基因序列信息后迅速开发并生产了一系列与SARS-CoV-2相关的产品。下表展示了我们开发的一些与COVID-19相关的重组抗体。

产品名称	货号	种属适应性	应用验证
N Antibody	CSB-RA33255A0GMY	Human Novel Coronavirus	ELISA, GICA
N Antibody	CSB-RA33255A1GMY	Human Novel Coronavirus	ELISA, WB, GICA
N Antibody	CSB-RA33255A2GMY	Human Novel Coronavirus	ELISA, GICA
N Antibody, Biotin conjugated	CSB-RA33255D1GMY	Human Novel Coronavirus	ELISA
N Antibody, FITC conjugated	CSB-RA33255C1GMY	Human Novel Coronavirus	ELISA
N Antibody, HRP conjugated	CSB-RA33255B1GMY	Human Novel Coronavirus	ELISA
S Antibody	CSB-RA33245A0GMY	Human Novel Coronavirus	ELISA, GICA
S Antibody	CSB-RA33245A1GMY	Human Novel Coronavirus	ELISA, GICA, Neutralising
S Antibody, Biotin conjugated	CSB-RA33245D1GMY	Human Novel Coronavirus	ELISA
S Antibody, FITC conjugated	CSB-RA33245C1GMY	Human Novel Coronavirus	ELISA
S Antibody, HRP conjugated	CSB-RA33245B1GMY	Human Novel Coronavirus	ELISA
SARS-CoV-2 Spike RBD Nanobody	CSB-RA33245A2GMY	Human Novel Coronavirus	ELISA, GICA, Neutralising
SARS-CoV-2 Spike RBD Nanobody, Biotin conjugated	CSB-RA33245D2GMY	Human Novel Coronavirus	ELISA
SARS-CoV-2 Spike RBD Nanobody, FITC conjugated	CSB-RA33245C2GMY	Human Novel Coronavirus	/
SARS-CoV-2 Spike RBD Nanobody, HRP conjugated	CSB-RA33245B2GMY	Human Novel Coronavirus	ELISA



神经科学是一个专注于神经系统的研究领域,包括大脑、脊髓和周围神经系统,以及它们如何与环境交互。

华美生物为神经科学研究提供了多样化的产品和服务,包括针对各种神经递质、神经肽、受体和离子通道的重组抗体等。

产品名称	货号	种属适应性	应用验证
ABAT Antibody	CSB-RA242969A0HU	Human	ELISA, IHC
ADAM17 Antibody	CSB-RA797631A0HU	Human	ELISA, IF
ADORA1 Antibody	CSB-RA224168A0HU	Human	ELISA, WB, IHC
AKR1C3 Antibody	CSB-RA825204A0HU	Human	ELISA, IF, FC
APP Antibody	CSB-RA994273A0HU	Human, Mouse, Rat	ELISA, WB, IF
ATP1A1 Antibody	CSB-RA796310A0HU	Human	ELISA, IHC
BACE1 Antibody	CSB-RA177574A0HU	Human, Mouse, Rat	ELISA, WB

产品名称	货号	种属适应性	应用验证
BCHE Antibody	CSB-RA252650A0HU	Human	ELISA, WB
BIRC5 Antibody	CSB-RA209144A0HU	Human	ELISA, IHC
C3 Antibody	CSB-RA303909A0HU	Human	ELISA, WB, IHC, FC
C3 Antibody	CSB-RA699863A0HU	Human	ELISA, IHC
CD34 Antibody	CSB-RA004926A0HU	Human	ELISA, IHC
CD97 Antibody	CSB-RA004972A0HU	Human	ELISA, IHC, IF
CHRM3 Antibody	CSB-RA827961A0HU	Human	ELISA, WB, IHC
COMT Antibody	CSB-RA909081A0HU	Human	ELISA, WB, IHC
COPS3 Antibody	CSB-RA556985A0HU	Human	ELISA, WB, IHC, IF, FC
CTNNB1 Antibody	CSB-RA155605A0HU	Human	ELISA, IHC
CXCR4 Antibody	CSB-RA569311A0HU	Human	ELISA, IF
DLG4 Antibody	CSB-RA255792A0HU	Human, Mouse, Rat	ELISA, WB
DMD Antibody	CSB-RA271553A0HU	Human	ELISA, IHC
DNM2 Antibody	CSB-RA877222A0HU	Human, Rat	ELISA, WB, IF, FC
DRD3 Antibody	CSB-RA929304A0HU	Human, Rat	ELISA, WB
FASN Antibody	CSB-RA240595A0HU	Human	ELISA, IF, FC
FDFT1 Antibody	CSB-RA909932A0HU	Human	ELISA, WB, IHC
FGF19 Antibody	CSB-RA546047A0HU	Human	ELISA, WB
FGFR2 Antibody	CSB-RA154582A0HU	Human, Mouse, Rat	ELISA, WB
FGFR4 Antibody	CSB-RA927449A0HU	Human	ELISA, IHC
FOS Antibody	CSB-RA008790A0HU	Human, Mouse	ELISA, WB, IHC, IF, FC
FTO Antibody	CSB-RA880154A0HU	Human	ELISA, WB, IHC, IF
FYN Antibody	CSB-RA699767A0HU	Human	ELISA, IHC
GABRA5 Antibody	CSB-RA559038A0HU	Human	ELISA, WB, IHC
GAPDH Antibody	CSB-RA009232A0HU	Human, Mouse	ELISA, WB
GBA Antibody	CSB-RA869334A0HU	Human	ELISA, WB
GDNF Antibody	CSB-RA009356A0HU	Human	ELISA, WB, IHC, FC, IP
GRIA2 Antibody	CSB-RA009899A0HU	Human	ELISA
GRIA2/GRIA3 Antibody	CSB-RA009900A0HU	Human	ELISA, IF
GSK3B Antibody	CSB-RA216259A0HU	Human	ELISA, WB, IHC, IF
GSTP1 Antibody	CSB-RA178104A0HU	Human, Mouse, Rat	ELISA, WB, IHC
HTR2C Antibody	CSB-RA616248A0HU	Human	ELISA, WB, IHC
HTT Antibody	CSB-RA802195A0HU	Human	ELISA, IHC
INS Antibody	CSB-RA584163A0HU	Human	ELISA, IHC
INSR Antibody	CSB-RA155156A0HU	Human	ELISA, IF
ISL1 Antibody	CSB-RA582994A0HU	Human	ELISA, WB
ISL1 Antibody	CSB-RA941933A0HU	Human	ELISA, WB, IHC

产品名称	货号	种属适应性	应用验证
KLK3 Antibody	CSB-RA548583A0HU	Human	ELISA, IHC
LGALS3 Antibody	CSB-RA970289A0HU	Human	ELISA, WB, IHC, IF, IP
LRRK2 Antibody	CSB-RA797150A0HU	Human	ELISA, IHC
MADCAM1 Antibody	CSB-RA215817A0HU	Human	ELISA, FC
MAOA Antibody	CSB-RA250615A0HU	Human	ELISA, IHC, IF
MAOB Antibody	CSB-RA999377A0HU	Human	ELISA, WB, IHC
MAPK1 Antibody	CSB-RA187762A0HU	Human, Mouse, Rat	ELISA, WB, IHC, IF
MAPT Antibody	CSB-RA246354A0HU	Human	ELISA, IHC
MAS1L Antibody	CSB-RA971033A0HU	Human, Rat	ELISA, WB, IF, FC
MDK Antibody	CSB-RA276759A0HU	Human	ELISA, IHC
MERTK Monoclonal Antibody	CSB-RA621519A1HU	Human	ELISA
MFN2 Antibody	CSB-RA799368A0HU	Human	ELISA, IHC
NCAM Antibody	CSB-RA121182A0HU	Human	ELISA, WB, IHC
NDRG1 Antibody	CSB-RA835678A0HU	Human, Mouse	ELISA, WB, IHC, IF
NDUFS4 Antibody	CSB-RA588190A0HU	Human	ELISA, IHC, FC
NGF Antibody	CSB-RA288635A0HU	Human, Rat	ELISA, WB, IHC
NPC1L1 Antibody	CSB-RA921474A0HU	Human	ELISA, IHC
NUDC Antibody	CSB-RA906015A0HU	Human, Mouse, Rat	ELISA, WB
OGT Antibody	CSB-RA232619A0HU	Human, Mouse, Rat	ELISA, WB, IHC
OPRD1 Antibody	CSB-RA947666A0HU	Human, Mouse	ELISA, WB
PAK2 Antibody	CSB-RA592787A0HU	Human, Mouse, Rat	ELISA, WB, FC, IP
PCYT1A Antibody	CSB-RA213218A0HU	Human	ELISA, WB, IF
Phospho-GSK3A/GSK3B (Y216 + Y279) Antibody	CSB-RA009962A216phHU	Human	ELISA, IHC
Phospho-GSK3B (Ser9) Antibody	CSB-RA009963A09phHU	Human	ELISA, WB, IHC, IF
Phospho-MAPK3 (T202) + MAPK1 (T185) Antibody	CSB-RA013456A185phHU	Human	ELISA, WB, IHC, IF
Phospho-MAPK3 (T202/Y204) + MAPK1 (T185/Y187) Antibody	CSB-RA013456A204phHU	Human	ELISA, WB
Phospho-MAPT (S324) Antibody	CSB-RA013481A324phHU	Human	ELISA, IF
Phospho-MAPT (S396) Antibody	CSB-RA013481A396phHU	Human	ELISA, WB
Phospho-MAPT (T231) Antibody	CSB-RA013481A231phHU	Human	ELISA, WB
Phospho-PAK1/PAK2/PAK3 (S144+S141+S139) Antibody	CSB-RA017407A144phHU	Human	ELISA, WB, IHC
Phospho-SNCA (S129) Antibody	CSB-RA021912A129phHU	Human	ELISA, IHC, IF
PTH1R Antibody	CSB-RA162005A0HU	Human	ELISA, WB
PTPN11 Antibody	CSB-RA289762A0HU	Human	ELISA, WB, IHC
PTPN11 Antibody	CSB-RA779218A0HU	Human	ELISA, WB
RPE65 Antibody	CSB-RA212530A0HU	Human	ELISA, IHC
SEMA4D Monoclonal Antibody	CSB-RA835707A1HU	Human	ELISA, FC
SLC25A12 Antibody	CSB-RA912385A0HU	Human	ELISA, WB

产品名称	货号	种属适应性	应用验证
SLC27A4 Antibody	CSB-RA235828A0HU	Human, Mouse	ELISA, WB
SLC6A4 Antibody	CSB-RA224413A0HU	Human	ELISA, WB, IHC
SNAP23 Antibody	CSB-RA827145A0HU	Human	ELISA, IHC
SNCA Antibody	CSB-RA585595A0HU	Human	ELISA, IHC
SOD2 Antibody	CSB-RA633872A0HU	Human, Rat	ELISA, WB, IHC
SRR Antibody	CSB-RA945827A0HU	Human	ELISA, WB, FC
SSTR2 Antibody	CSB-RA827375A0HU	Human	ELISA, IHC
STX4 Antibody	CSB-RA290392A0HU	Human	ELISA, WB
TACR1 Antibody	CSB-RA555508A0HU	Human, Mouse	ELISA, WB
TBR1 Antibody	CSB-RA618090A0HU	Human	ELISA
TRPM8 Antibody	CSB-RA186773A0HU	Human	ELISA, IHC
TTR Antibody	CSB-RA437590A0HU	Human	ELISA, IHC
TTR Antibody	CSB-RA588381A0HU	Human	ELISA, IHC
VCP Antibody	CSB-RA182227A0HU	Human, Rat	ELISA, WB, IHC, IF, IP
YWHAB Antibody	CSB-RA616077A0HU	Human, Mouse, Rat	ELISA, WB, IF, FC
YWHAG Antibody	CSB-RA824302A0HU	Human	ELISA, WB, IHC

## 信号转导



信号转导过程通常包括几个步骤,包括信号接收、信号转导和信号响应。在信号接收过程中,信号分子与细胞表面的受体结合,导致受体的构象发生变化,从而在细胞内触发信号级联。理解不同的信号转导途径及其机制对于开发针对各种疾病的靶向治疗方法非常重要。

产品名称	货号	种属适应性	应用验证
ACVR2B Antibody	CSB-RA260702A0HU	Human	ELISA, IHC
ANXA2 Antibody	CSB-RA987782A0HU	Human	ELISA, WB, IHC
Claudin-18.2 Monoclonal Antibody	CSB-RA005498A1HU	Human	ELISA, FC
CLDN18 Monoclonal Antibody	CSB-RA005498A2HU	Human	ELISA, FC
CLDN4 Antibody	CSB-RA005506A0HU	Human	ELISA
CNN1 Antibody	CSB-RA005655A0HU	Human, Mouse	ELISA, WB, IHC
DNAJA1 Antibody	CSB-RA589492A0HU	Human	ELISA, WB, IF, FC
FLNA Antibody	CSB-RA548809A0HU	Human	ELISA, IHC
GCG Antibody	CSB-RA009315A0HU	Human	ELISA
GOLM1 Antibody	CSB-RA009666A0HU	Human	ELISA, WB, FC
GPX1 Antibody	CSB-RA009866A0HU	Human	ELISA

产品名称	货号	种属适应性	应用验证
HSP90AA1 Antibody	CSB-RA011087A0HU	Human, Rat	ELISA, WB, IHC, IF, IP
HSP90AA1 Antibody	CSB-RA011087A1HU	Human	ELISA, IHC, IF
HSP90AA1 Antibody	CSB-RA011087A2HU	Human	ELISA, WB, IHC, IF
HSP90AA1/HSP90AB1 Antibody	CSB-RA010802A0HU	Human, Rat	ELISA, WB, FC, IP
HSP90AB1 Antibody	CSB-RA904894A0HU	Human	ELISA, WB, IHC, IF, FC
HSPA8 Antibody	CSB-RA010829A0HU	Human	ELISA, WB
HSPB1 Antibody	CSB-RA010833A0HU	Human	ELISA, WB, IHC, IF, FC, IP
IGF2 Antibody	CSB-RA011088A0HU	Human	ELISA
ILK Antibody	CSB-RA963626A0HU	Human, Mouse	ELISA, WB, IF, IP
ITGB1 Antibody	CSB-RA011880A0HU	Human	ELISA, WB, IHC, IF, FC
ITK Antibody	CSB-RA954682A0HU	Human	ELISA, IHC
MAP2K1 Antibody	CSB-RA225579A0HU	Human	ELISA, WB, IHC, IP
MAP2K1 Antibody	CSB-RA957619A0HU	Human, Rat	ELISA, WB, IHC, IP
MAP3K3 Antibody	CSB-RA013425A0HU	Human	ELISA
MYLK Antibody	CSB-RA145619A0HU	Human	ELISA, WB, FC
NFKBIA Antibody	CSB-RA015761A0HU	Human	ELISA, WB, IHC, IP
OCLN Antibody	CSB-RA293053A0HU	Human	ELISA, IHC, FC
PDE2A Antibody	CSB-RA150831A0HU	Human	ELISA, IF
PDE4D Antibody	CSB-RA996952A0HU	Human	ELISA, WB
Phospho-AKT1 (Ser473) Antibody	CSB-RA001553A473phHU	Human	ELISA, WB, IHC, IF, IP
Phospho-AKT1 (T450) Antibody	CSB-RA001553A450phHU	Human	ELISA, WB
Phospho-CTNNB1 (S33/S37) Antibody	CSB-RA006169A33phHU	Human	ELISA, IF
Phospho-EGFR (Y1068) Antibody	CSB-RA007479A1068phHU	Human	ELISA, WB
Phospho-EGFR (Y1092) Antibody	CSB-RA007479A1092phHU	Human	ELISA, WB
Phospho-EIF2AK2 (T446) Antibody	CSB-RA007511A446phHU	Human	ELISA, WB, IHC, IF
Phospho-ERN1 (S724) Antibody	CSB-RA007795A724phHU	Human	ELISA, WB, IF
Phospho-ESR1 (S118) Antibody	CSB-RA007830A118phHU	Human	ELISA, IHC
Phospho-GYS1 (S641) Antibody	CSB-RA010078A641phHU	Human	ELISA, WB, IF
Phospho-HSPB1 (S78) Antibody	CSB-RA010833A78phHU	Human	ELISA, WB, IHC
Phospho-HSPB1 (S82) Antibody	CSB-RA010833A82phHU	Human	ELISA, WB, IHC
Phospho-MAP2K1 (T292) Antibody	CSB-RA013409A292phHU	Human	ELISA, WB
Phospho-MAPK8/MAPK9/MAPK10 (T183/T183/T221) Antibody	CSB-RA013466A183phHU	Human	ELISA, WB, IHC
Phospho-MLKL (S358) Antibody	CSB-RA850851A358phHU	Human	ELISA, IHC
Phospho-NFKBIA (S32) Antibody	CSB-RA015761A32phHU	Human	ELISA, WB, IF
Phospho-PPP2CA (Y307) Antibody	CSB-RA018559A307phHU	Human	ELISA, WB
Phospho-PRKAA2 (S491) Antibody	CSB-RA805325A491phHU	Human	ELISA, WB
Phospho-PRKAA2 (Thr172) Antibody	CSB-RA805325A172phHU	Human	ELISA, WB, IF



产品名称	货号	种属适应性	应用验证
Phospho-PRKCA (T638) Antibody	CSB-RA018699A638phHU	Human	ELISA, WB, IF
Phospho-PRKCZ (T560) Antibody	CSB-RA018710A560phHU	Human	ELISA, WB
Phospho-PTPN11 (Y542) Antibody	CSB-RA019025A542phHU	Human	ELISA, WB, IP
Phospho-PXN (Y118) Antibody	CSB-RA019112A118phHU	Human	ELISA, WB
Phospho-RAF1 (S259) Antibody	CSB-RA019284A259phHU	Human	ELISA, WB, IHC, IF
Phospho-RAF1 (S43) Antibody	CSB-RA019284A43phHU	Human	ELISA, IF
Phospho-RAF1 (S621) Antibody	CSB-RA019284A621phHU	Human	ELISA, WB, IF
Phospho-RPS6KA1 (S380) Antibody	CSB-RA618984A380phHU	Human	ELISA, WB, IP
Phospho-RPS6KA1 (T359+S363) Antibody	CSB-RA618984A359phHU	Human	ELISA, WB, IF, IP
Phospho-RPS6KA5 (S376) Antibody	CSB-RA020468A376phHU	Human	ELISA, IHC
Phospho-SMAD2 (S250) Antibody	CSB-RA618017A250phHU	Human	ELISA, WB
Phospho-SMAD2 (S255) Antibody	CSB-RA618017A255phHU	Human	ELISA, IF
Phospho-SMAD5 (S463/S465) Antibody	CSB-RA859108A465phHU	Human	ELISA, WB
Phospho-SMAD5 (S463+S465) Antibody	CSB-RA859108A463phHU	Human	ELISA, IHC
Phospho-STAT1 (S727) Antibody	CSB-RA022810A727phHU	Human	ELISA, WB, IHC, IF
Phospho-STAT3 (S727) Antibody	CSB-RA022812A727phHU	Human	ELISA, WB, IHC, IP
Phospho-STAT3 (Tyr705) Antibody	CSB-RA022812A705phHU	Human	ELISA, WB, IHC
Phospho-STAT5A (Y694) Antibody	CSB-RA022814A694phHU	Human	ELISA, WB, IHC
Phospho-YAP1 (S127) Antibody	CSB-RA026244A127phHU	Human	ELISA, WB, IHC
PKN2 Antibody	CSB-RA921617A0HU	Human	ELISA, WB, IHC, IF, FC
PLEKHA1 Antibody	CSB-RA918477A0HU	Human	ELISA, WB
PRKAR1A Antibody	CSB-RA018694A0HU	Human	ELISA, WB, IF
PRKCQ Antibody	CSB-RA978159A0HU	Human, Mouse	ELISA, WB
PXN Antibody	CSB-RA019112A0HU	Human	ELISA
RAB27A Antibody	CSB-RA285197A0HU	Human	ELISA, FC
RGS6 Antibody	CSB-RA253226A0HU	Human	ELISA, IHC, IF
SCIN Antibody	CSB-RA213020A0HU	Human	ELISA, IHC
SERPINH1 Antibody	CSB-RA699016A0HU	Human	ELISA, IHC
SRC Antibody	CSB-RA022650A0HU	Human, Mouse	ELISA, WB, IF, FC
STIP1 Antibody	CSB-RA022831A0HU	Human	ELISA, WB
STK33 Antibody	CSB-RA207790A0HU	Human	ELISA, IHC



【关注有礼】【扫我咨询】

## **YOUR GOOD PARTNER IN BIOLOGY RESEARCH!**

地址：武汉市东湖新技术开发区高新大道818号高科医疗器械园B11号2楼  
Q Q: 1031906505 电话：15377579373 网址：[www.cusabio.cn](http://www.cusabio.cn)